

VRIDDHI PRABHA

**PREMIUM
BOTIQUE
HOMES**





VRIDDHI Prabha

Experience the epitome of contemporary living at **Vriddhi Prabha** in Banashankari 2nd Stage, Near BNMIT & BDA Complex. These premium boutique homes offer a unique opportunity to live at the heart of a vibrant and thriving community, making it the epitome of desirable and comfortable living. The project seamlessly blends style and functionality. Residents enjoy upscale amenities, stunning city views, and a refreshing ambiance. **Vriddhi Prabha** is more than a home; it's a lifestyle where cherished memories and modern luxury intertwine seamlessly.

At a glance:



Luxury Boutique
Home



Banashankari
2nd Stage



3 BHK



2000 Sq. Ft

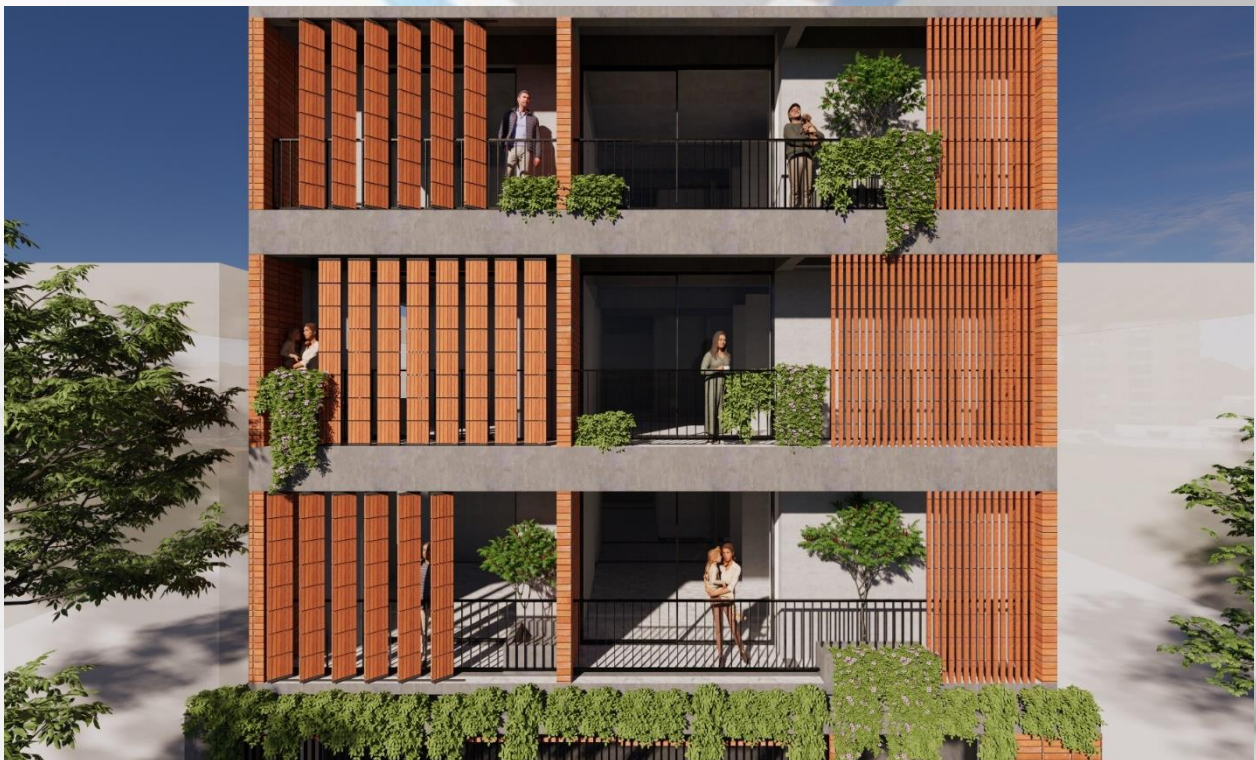
Features:

- Only 4 Boutique Homes
- 2 Car Parking per home
- Unit Area: 2000 Sq. ft.
- Structure: Stilt + 4 Floors
- Vastu Compliant, East facing
- Luxury Specifications
- Location: 27th Cross, Bsk 2nd Stage, opp. BNMIT, Near BDA Complex

Amenities:

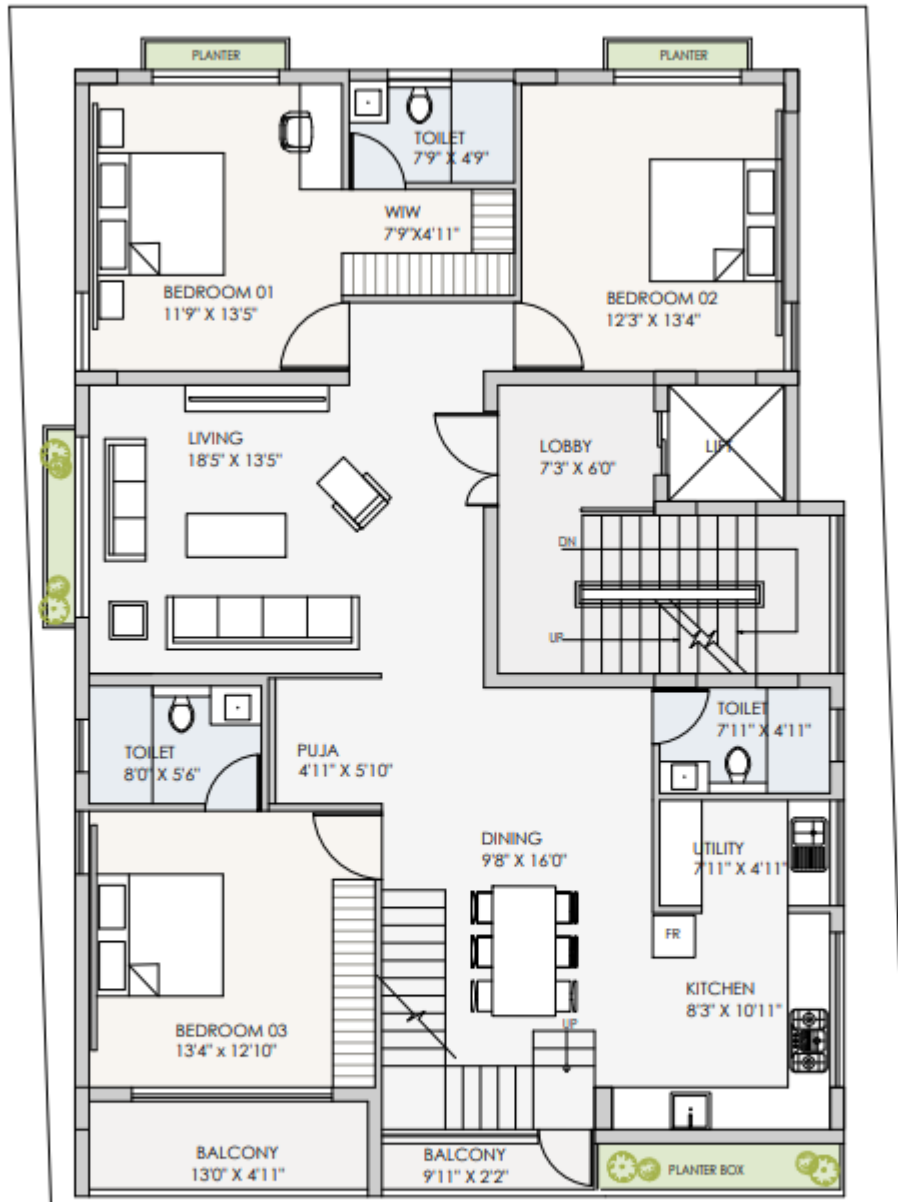
- Multipurpose Room
- Terrace Gazebo
- Designer landscaping
- DG Power Backup
- Lift
- Security
- CCTV in common areas



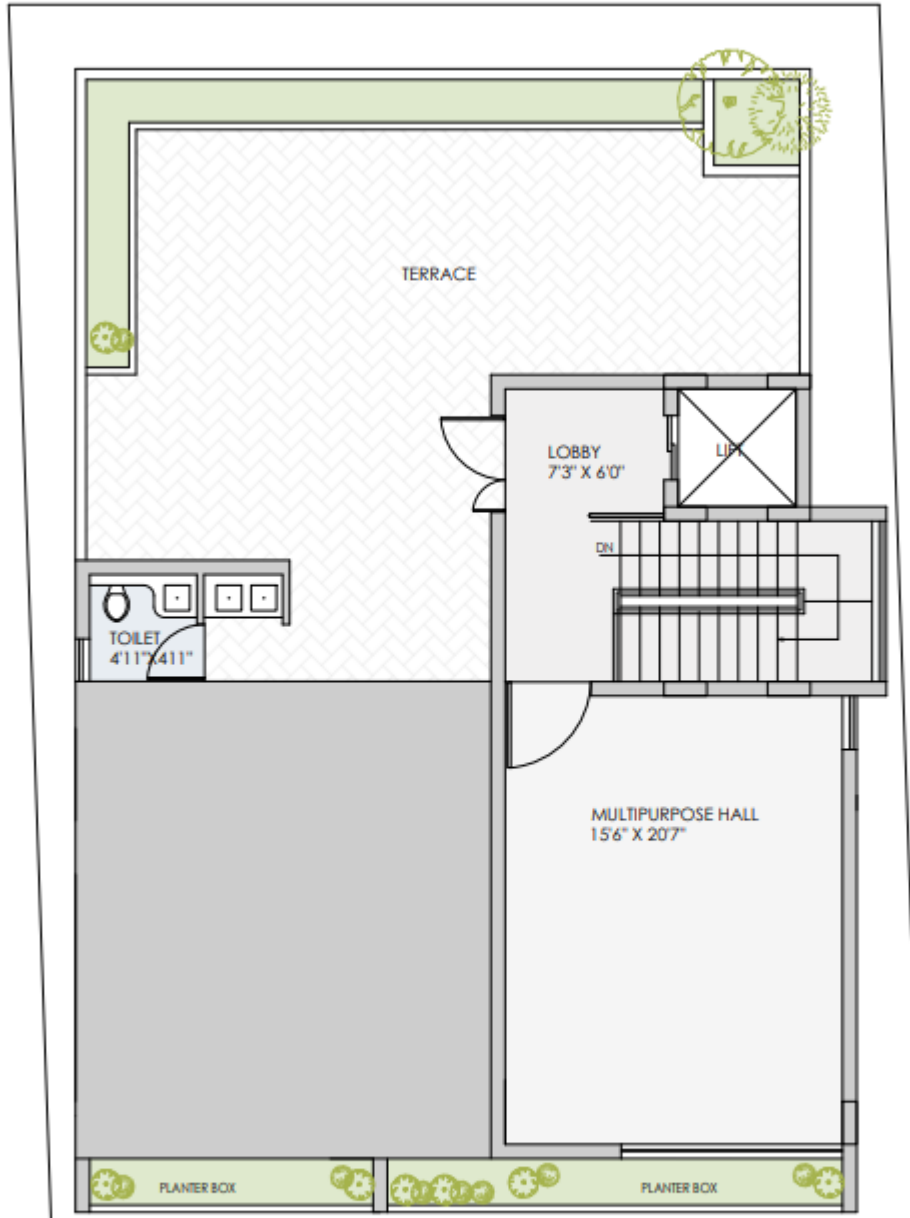


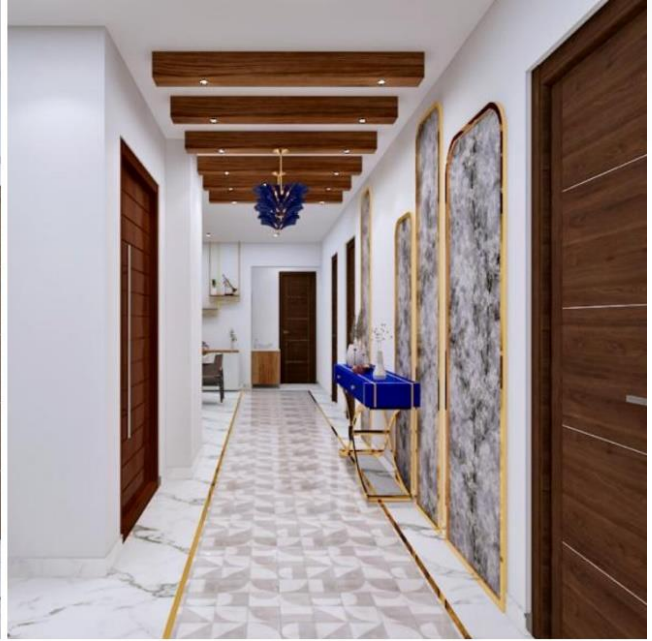


Floor Plan



Terrace Plan





SPECIFICATIONS

Structure:

- RCC frame structure with premium solid concrete block masonry walls 6" for external walls & 4" for internal walls

Flooring:

- Premium Vitrified Tiles
- Anti-skid tiles for Balconies

Doors & Windows:

- Main Door: Teak wood frame with both side teak veneer shutter
- Other Doors: Hardwood frame with veneer shutter
- UPVC 3 track sliding windows with mosquito mesh

Kitchen:

- 20 mm thick black polished granite platform with Carysil Sink
- 2 feet tile dado above granite platform
- Provision for water purifier

Utility:

- Covered utility with window
- Antiskid tiles for flooring & glazed tile dado for walls
- Provision for washing machine, dish washer & vessel washing

Toilets:

- Anti-skid tiles for flooring & glazed tile dado for walls
- Grohe / Jaguar or equivalent chromium plated fittings
- American Standard / Hindware or equivalent sanitary fixtures

Painting:

- Acrylic emulsion paint for internal walls

Electrical:

- BESCOM power supply with individual meters
- Concealed copper wiring with circuit breakers for safety
- Modular switches with 5 & 15 amp points as per drawing
- Charging point for Electric Vehicles
- 24hrs DG Power back-up

Lift:

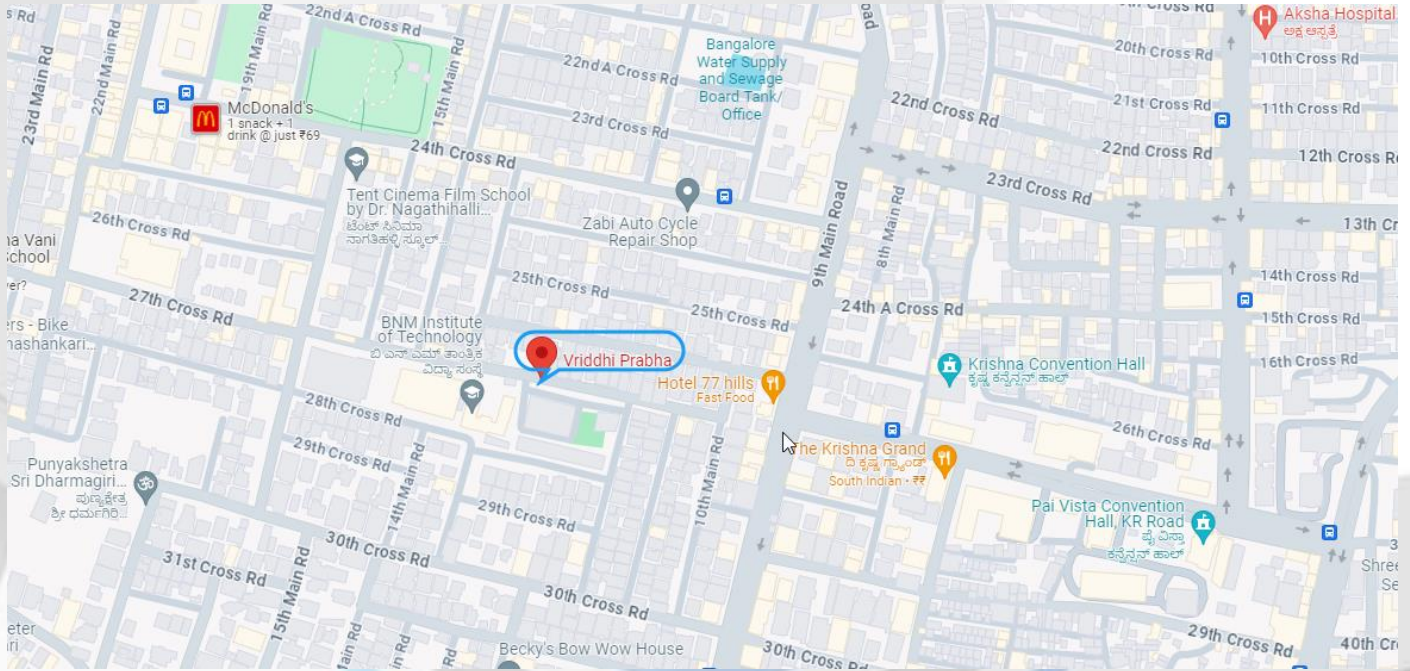
- Kone / Thyssenkrupp or equivalent make

Crafting Excellence: Our Project History






Location Map: <https://www.google.com/map/VriddhiPrabha>



CONTACT US

 +91 91141 91145
+91 98458 55622

 info@vridhibuildcon.com

 www.vridhibuildcon.com



Disclaimer: This brochure and rendering contained herein is an artist impression, conceptual interpretation proposal only and merely intended as illustration. Developer reserves the right to make any modifications, revisions or withdrawals in its sole discretion without prior notice.