



# VRIDDHI

## Lalith Mahal

**Vriddhi Lalith Mahal** is a premium Boutique Home project located in Jayanagar 7th Block, where everything is just 5-10 minutes' walk away. This is a project where wonderful memories will come to life, as we bring ready homes in a boutique lifestyle. This modern luxury home offers amenities along with brilliant city views and gentle breeze of fresh air.

### At a glance:



Luxury Duplex  
Home



Jayanagar 7<sup>th</sup>  
Block



4 BHK



2100 Sq. Ft

### Features:

- Only 3 Duplex Homes
- 4 BHK Premium Boutique Homes
- 2 Car Parking per home
- Structure: Stilt + G + 3 Floors
- Vastu Complaint, East facing
- Luxury Specifications
- Location: Jayanagar 7th Block, K R Road, 10th Cross, Near Aksha Hospital

### Amenities:

- Multipurpose Room
- Terrace Gazebo
- Designer landscaping
- Intercom
- DG Power Backup
- Lift
- Security
- CCTV in common areas

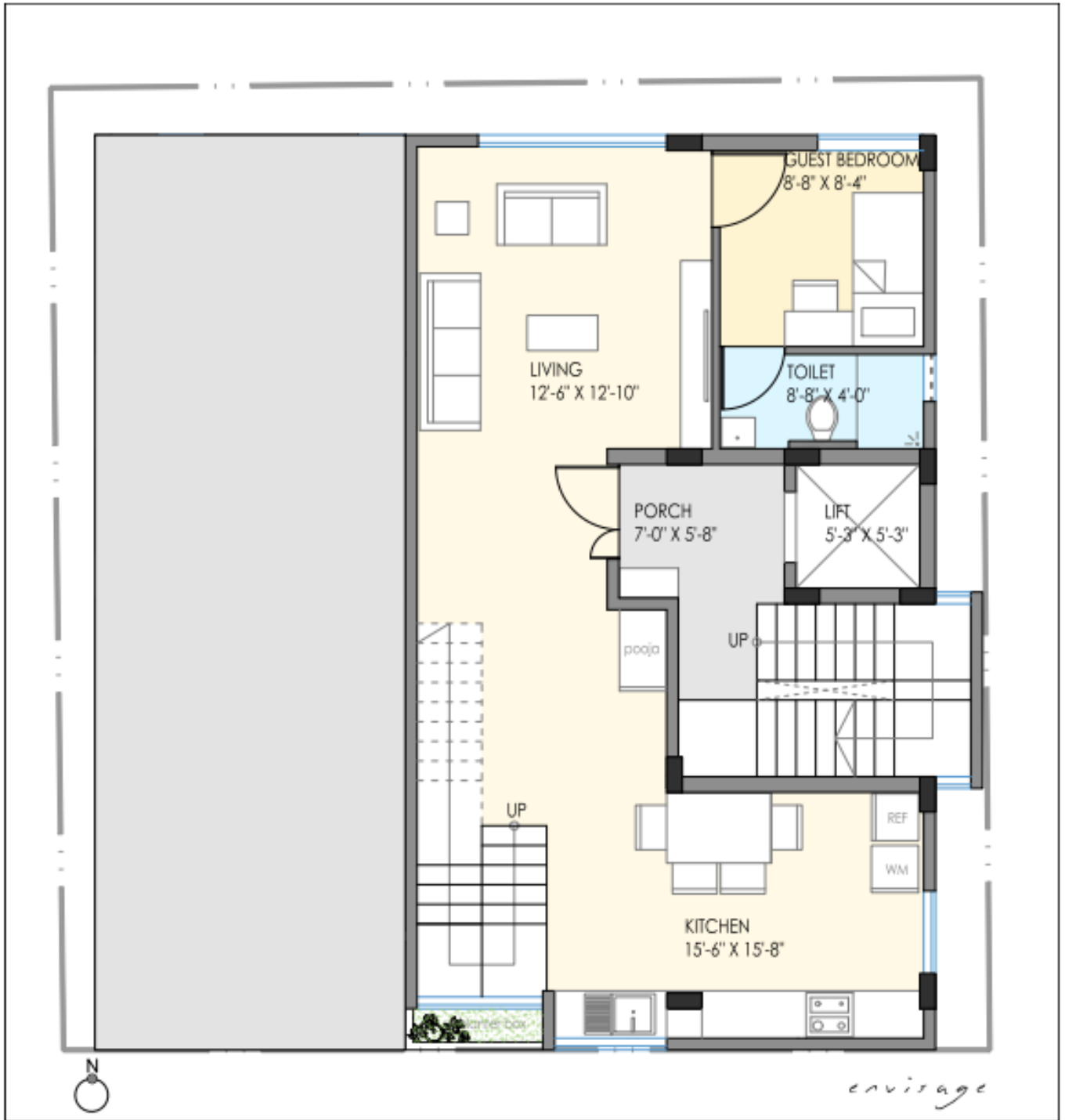




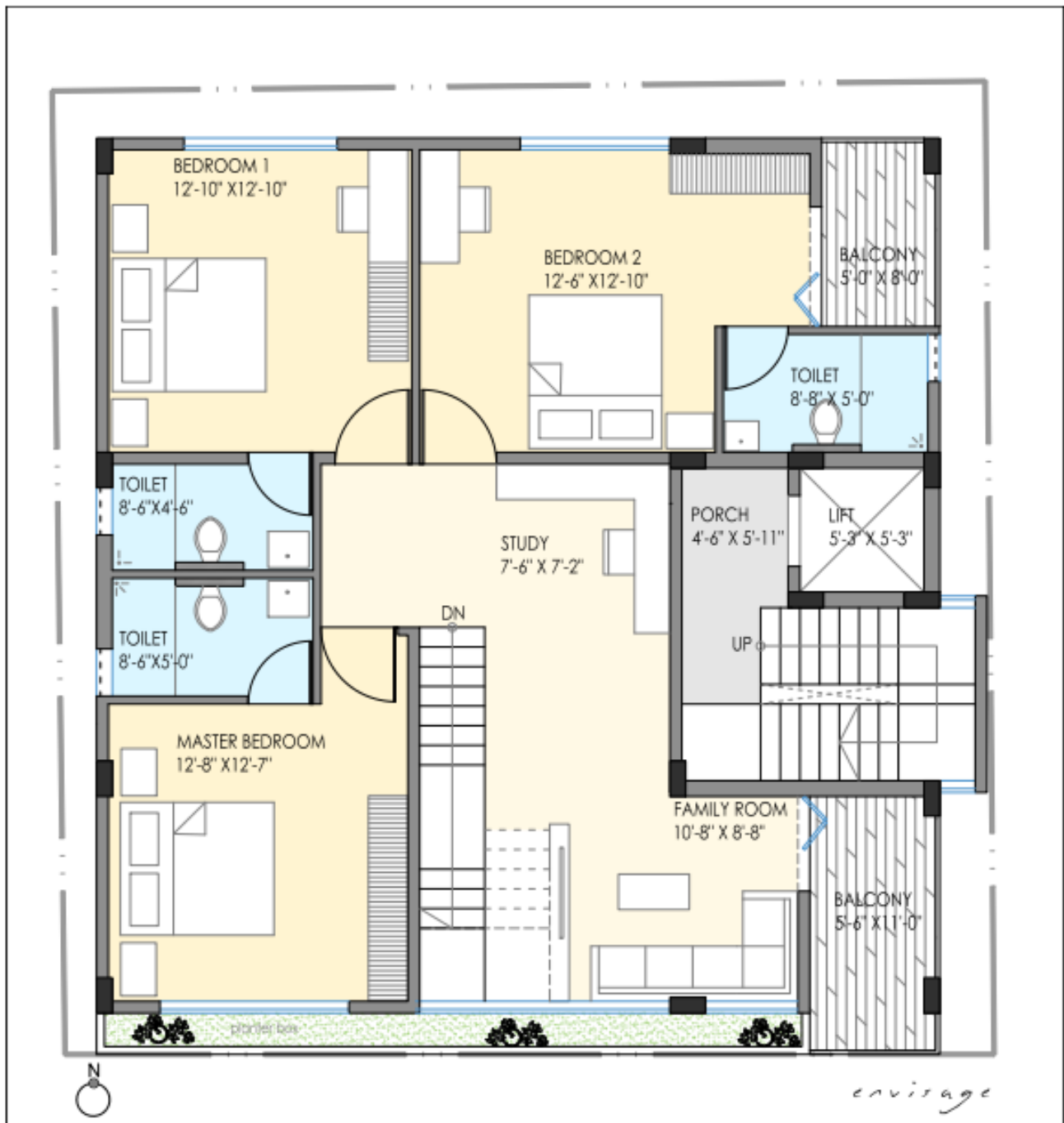




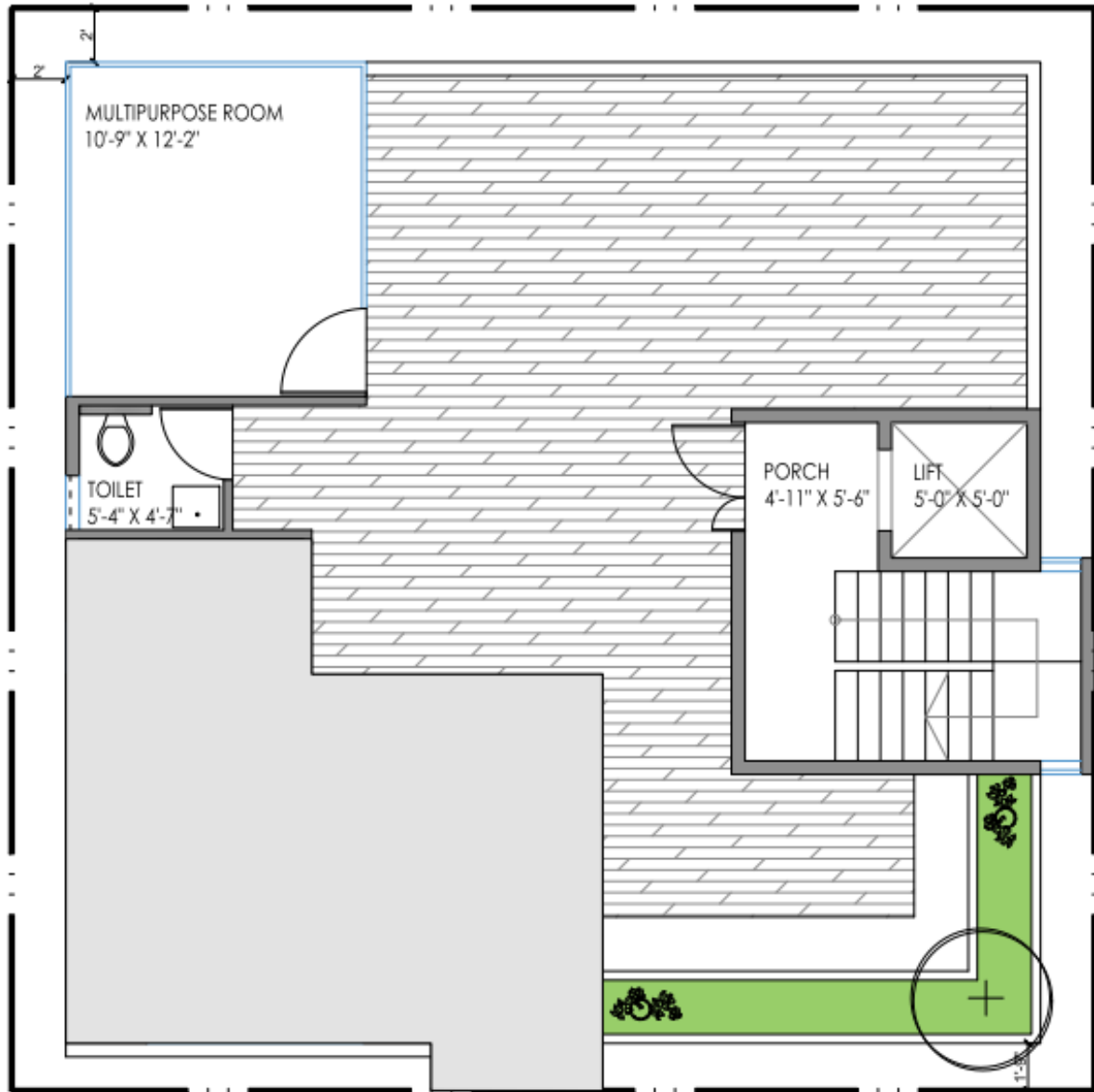
# First Floor Plan



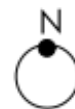
## Second Floor Plan



# Terrace Plan



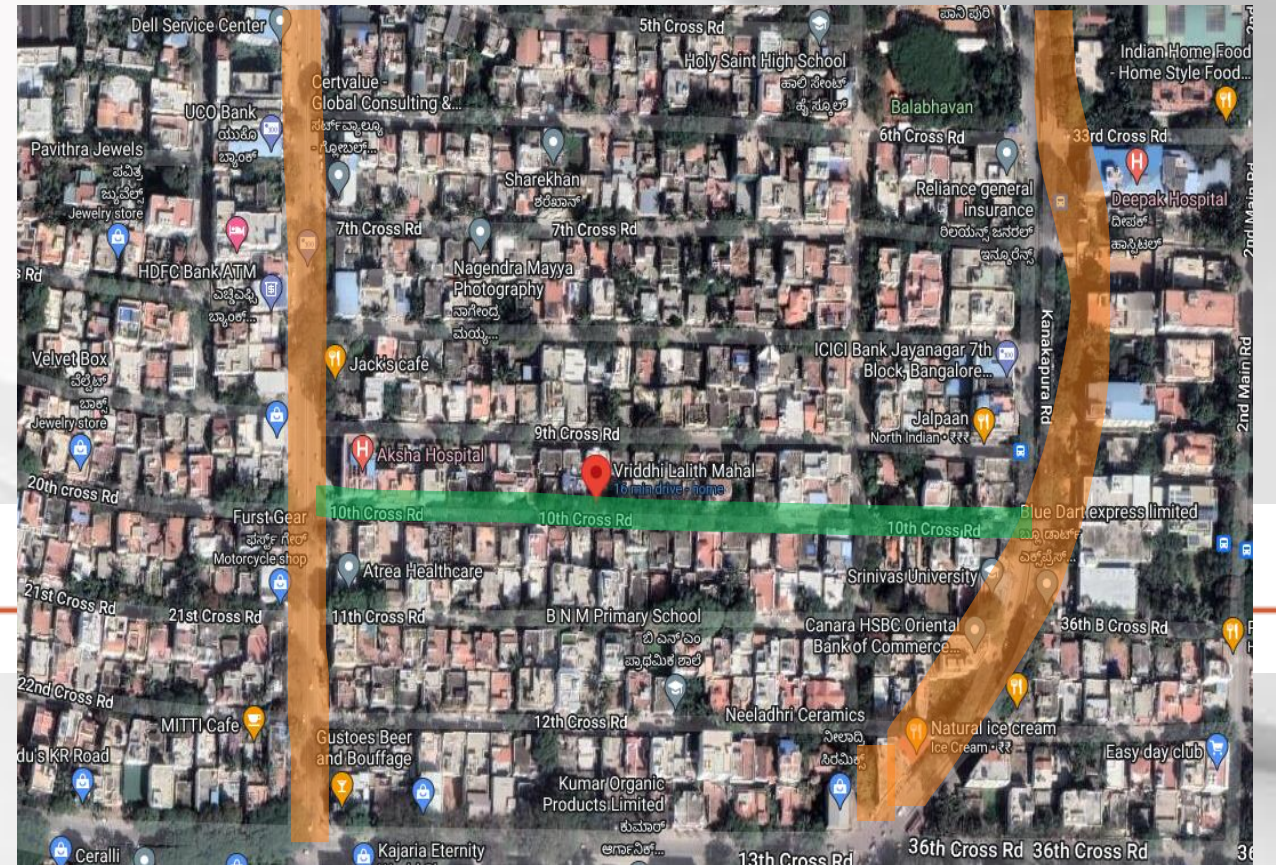
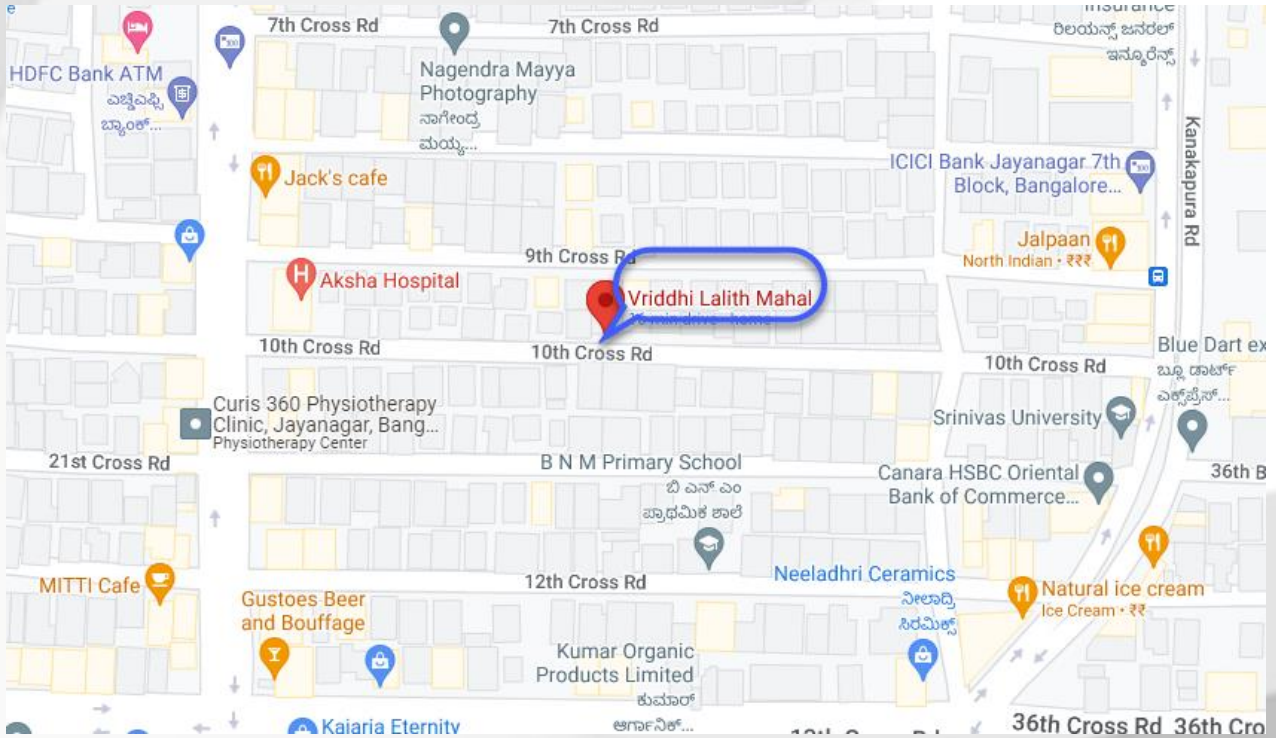
Proposed apartment for Vruddhi @ Bangalore  
TERRACE FLOOR PLAN



*envisage*

31/01/2022

Location Map: <https://goo.gl/maps/P2AvtxVoKmwnRbjs9>



## SPECIFICATIONS

### Structure:

- RCC frame structure with premium solid concrete block masonry walls 6" for external walls & 4" for internal walls

### Flooring:

- Premium Vitrified Tiles for Living, Dining & Kitchen
- Wooden flooring for Bedrooms
- Anti-skid tiles for Balconies

### Doors & Windows:

- Main Door: Polished Teak wood frame with teak shutter
- Other Doors: Hardwood frame with Veneer shutter
- UPVC 3 track sliding windows with mosquito mesh

### Kitchen:

- 20 mm thick black polished granite platform with Carysil Sink
- 2 feet tile dadoo above granite platform
- Provision for water purifier

### Utility:

- Covered utility with window
- Antiskid tiles for flooring & glazed tile dadoo for walls
- Provision for washing machine, dish washer & vessel washing

### Toilets:

- Anti-skid tiles for flooring & glazed tile dadoo for walls
- Grohe / Kohler or equivalent chromium plated fittings
- American Standard / Kohler or equivalent sanitary fixtures

### Painting:

- Acrylic emulsion paint for internal walls


### Electrical:

- BESCOM power supply with individual meters
- Concealed copper wiring with circuit breakers for safety
- Modular switches with 5 & 15 amp points as per drawing
- Charging point for Electric Vehicles
- 24hrs DG Power back-up

### Lift:

- Kone / Schindler or equivalent make

**CONTACT US**

 **+91 91141 91145**  
**+91 98458 55622**

 **info@vriddhibuildcon.com**

 **www.vriddhibuildcon.com**

